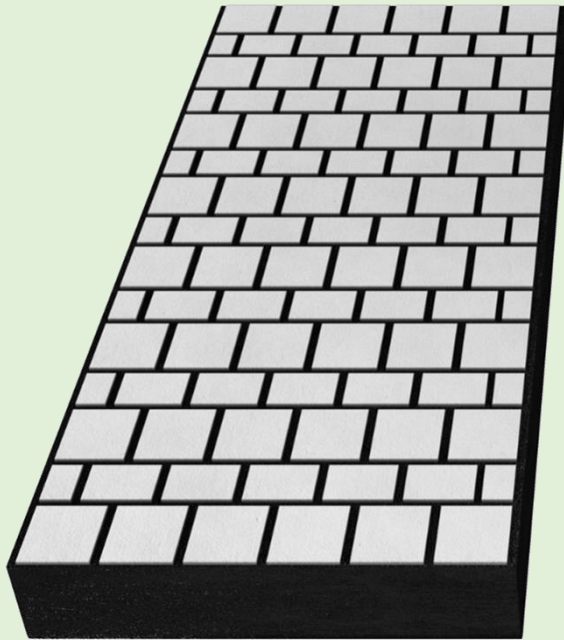




TOO «Min&Pro»

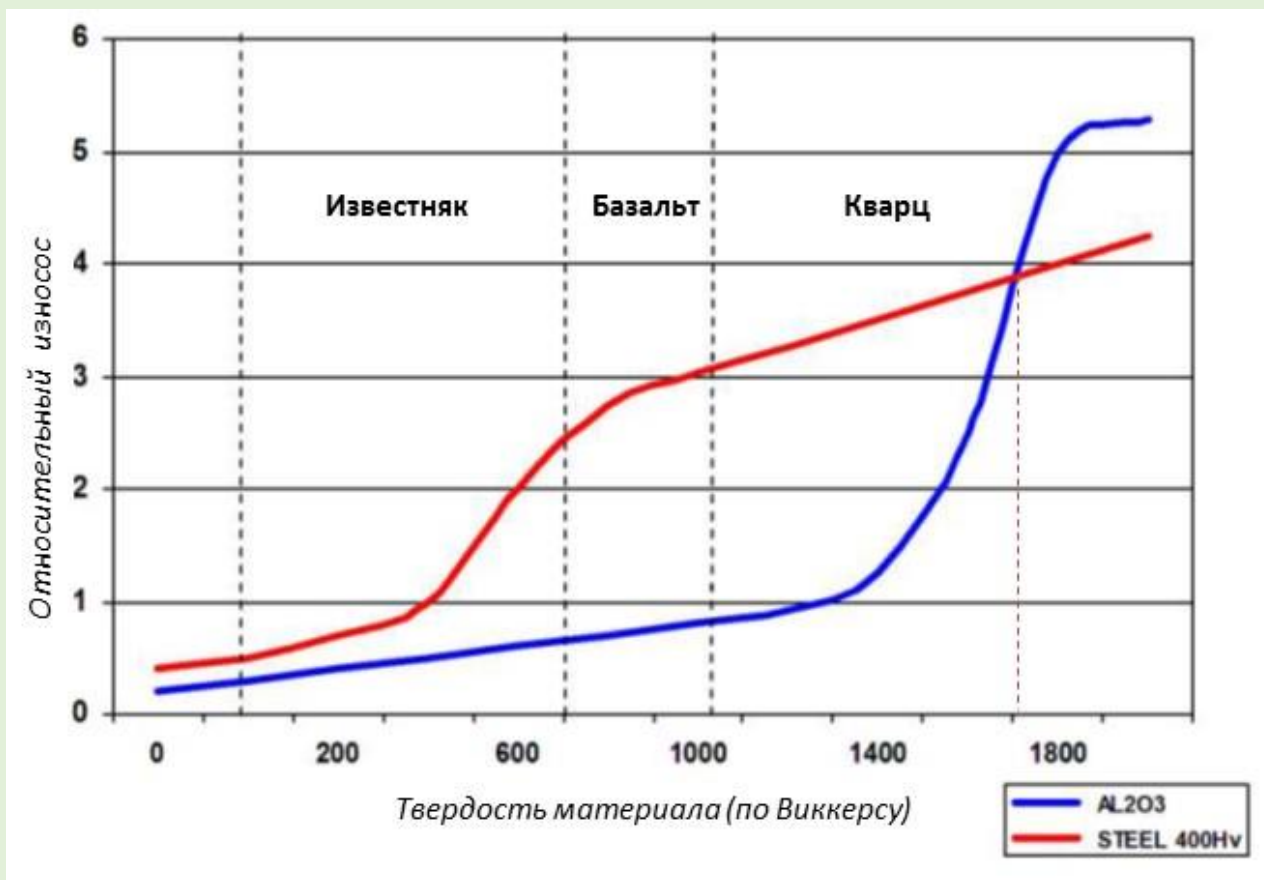
RCL – Rubber Ceramic Lining





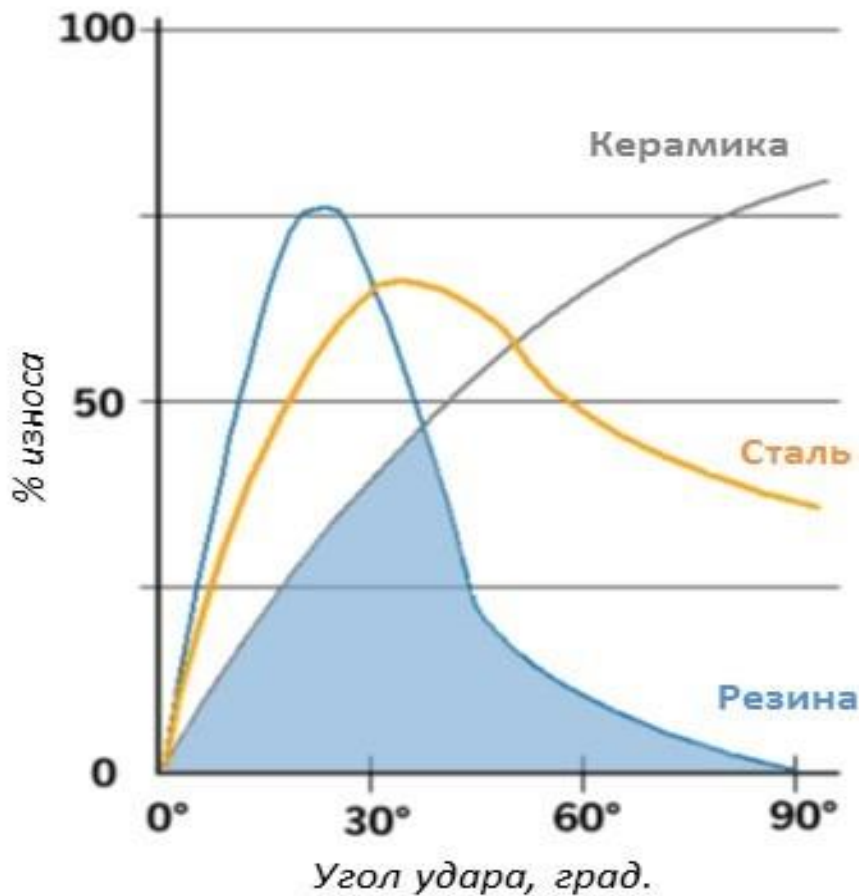
- [illegible]

RCL – Comparison with steel



In comparison with steel ceramics it has higher wearing capacity within the range of hardness index of the wearable material from 50 to 1600kgf / mm².

RCL – Complete reconciliation



In the angle of attack from 0 to 40 degrees ceramics has the lowest wear %

Steel has nothing on versus ceramics or rubber

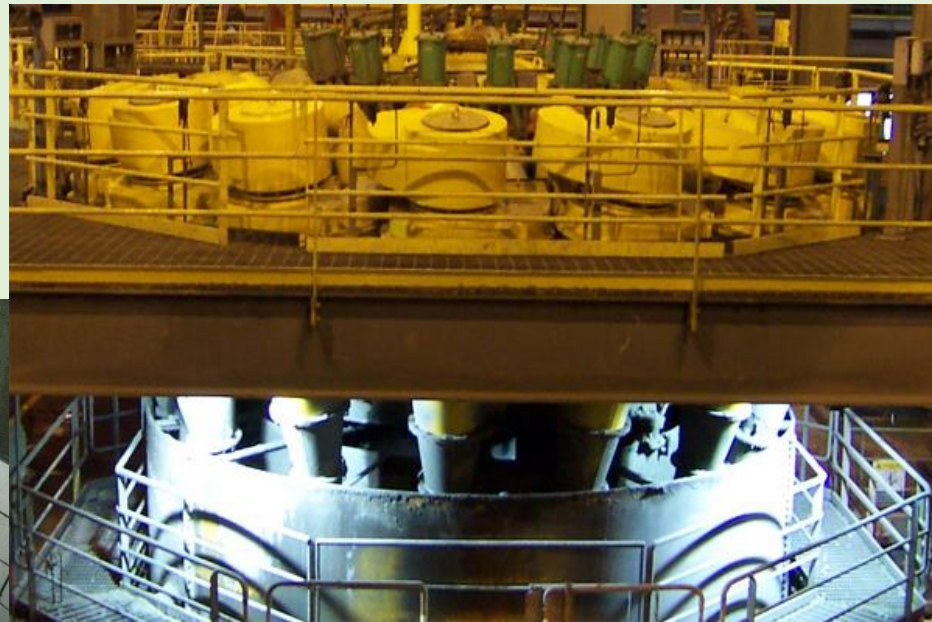
In the angle of attack from 40 to 90 degrees rubber has the lowest wear %

RCL – Application variants

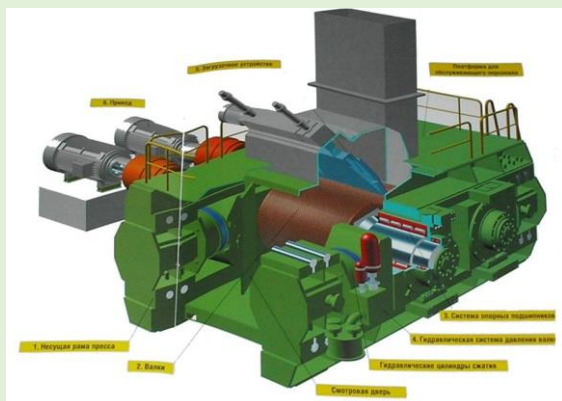


❖ JSC gold mining company Polyus (Russia).

- ❑ Runner lining of the hydrocyclone's
- ❑ Has been installed in February 2014 – and it's working nowadays!
- ❑ Throughput 20 million tons of metallic mineral per year
- ❑ The partition size of the material of 80 % class – 0,1 mm.
- ❑ Protodyakonov scale of hardness 13-15.



RCL – Application variants



❖ JSC «Altyntau Kokshetau» «Kazzink» (Kazakhstan).

- ❑ Bunker's lining and splitters' of the roller-press
- ❑ The durability of Hardox 450 – 18-20 days.
- ❑ The demonstrated life RCL – 3-4 mo.
- ❑ Throughput is 4 million tons of ore minerals per year + circulating load 200 %. Total : **12 million tons per year !**
- ❑ The partition size of the material of 90 % class – 30 mm.
- ❑ Protodyakonov scale of hardness 18-20.
- ❑ Bond abrasion index grs- 0,45-0,60 – is critical abrasive.

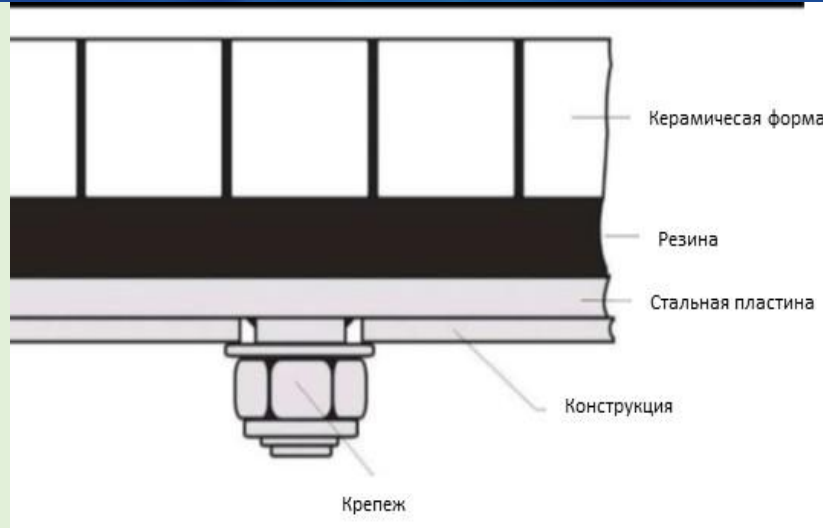
RCL – Application variants



❖ **Ziryanov's Mining and Processing Complex LLP «Kazzink» (Kazakhstan) – industrial tests.**

- ☐ The lining of discharge chute of the cone crusher
- ☐ Has been installed in August 2014 , – and it's working nowadays!
- ☐ Throughput is 2,6 million tons of ore minerals per year.
- ☐ The partition size of material of 90 % class – 70 mm.
- ☐ Protodyakonov scale of hardness 14-16.

RCL – The main advantages

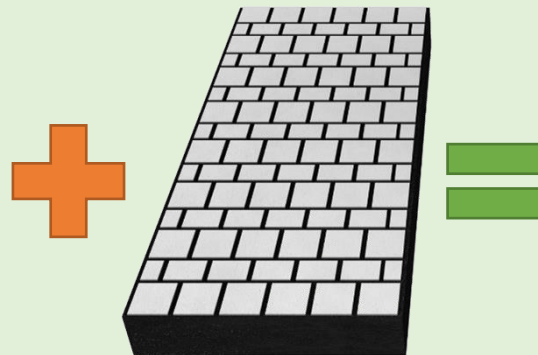
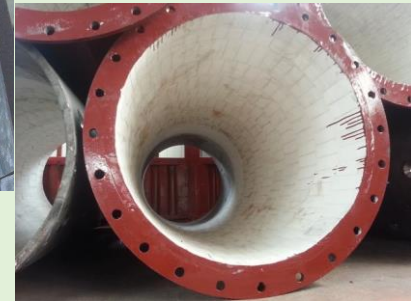


- ☐ High service life of wearing
- ☐ Low weight in comparison with the metal analogues
- ☐ Low index of friction
- ☐ The decreasing of bunker's sticking and mechanical interfaces
- ☐ Low noise level in comparison with steel
- ☐ Different options of fitting
- ☐ Proven experience of commercial operation at the mine-mill enterprises

RCL – Potential application



- ☐ Lining of bunkers, conduits and mechanical interfaces
- ☐ Lining of pipe connections
- ☐ Inrushing and draining checker fillings to hydrocyclones
- ☐ Carbodies
- ☐ Protection of other surfaces





TOO «Min&Pro»

**21 A, Abai Ave., Office 40,
Aktobe city**

Tel. 8(7132) 54-77-02

Email: Llpminpro@gmail.com

www.minpro.kz